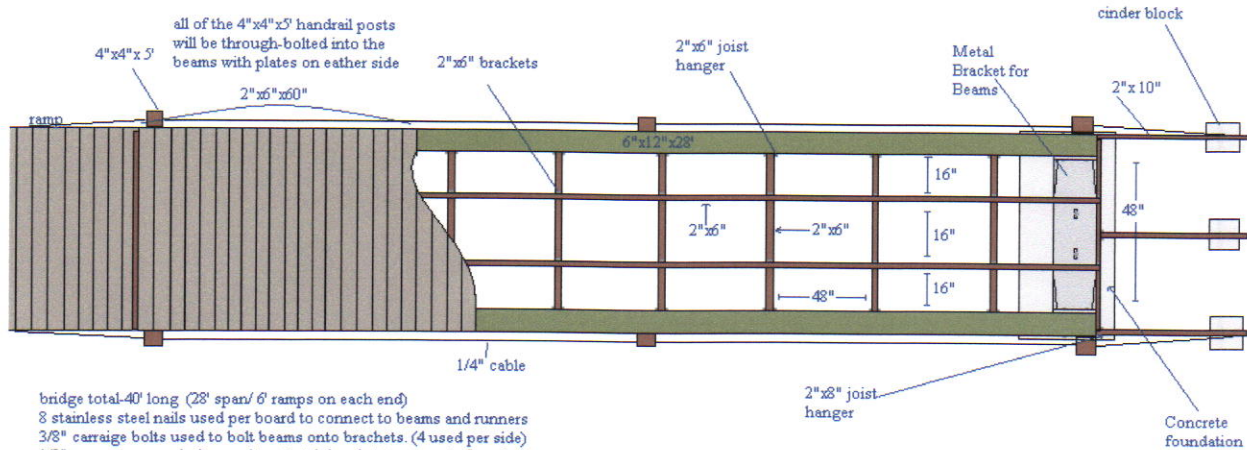


## Austin Potter Eagle Scout Project

Thanks to Mr. Lincoln and all the help from American Pole and Timber, this was third and final bridge plan. This one included both the cement foundation and the piers/poles. It also includes ramps to get up onto the bridge easily. The handrail was changed to a cable to prevent people from vandalizing the handrail.

2"x6" joist hangers used four 2" "duralast" screws per hanger.  
2"x6" - 2"x10" ramp joist hangers used the 3 1/4 inch stainless steel nails

runner supports use 4 stainless steel nails per support



Concrete foundation dimensions-

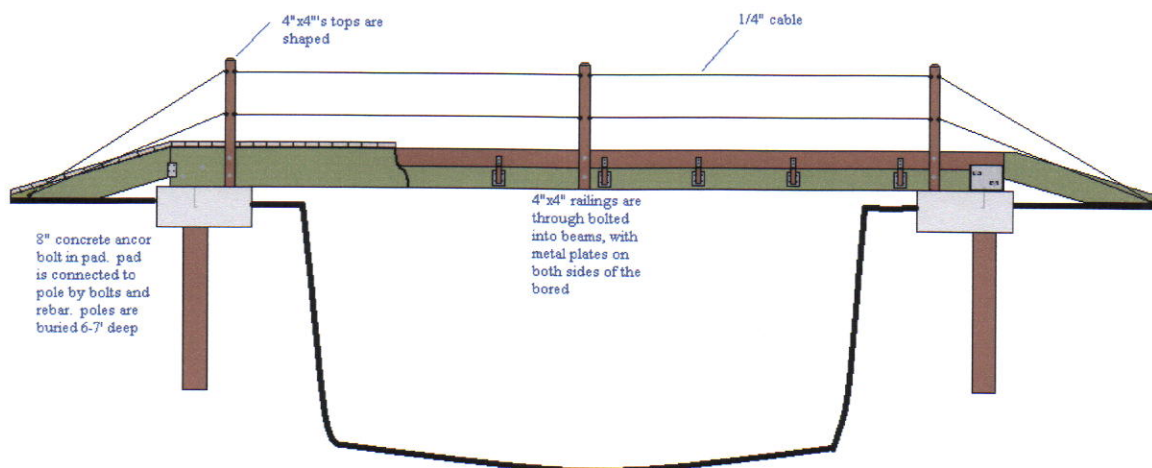
near side- 28"x58"

far side- 32"x53"

13" deep on both sides- poured 1/2 yard of concrete on each end

Pileings-

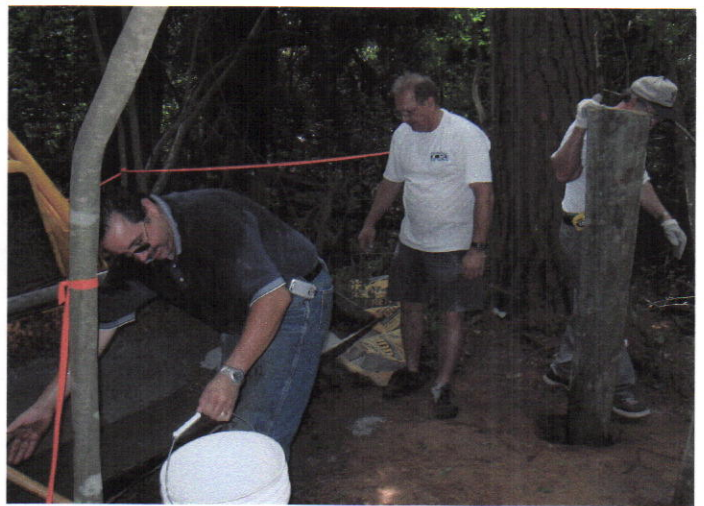
2 per foundation (bolted and rebarbed into concrete) 6-7 feet deep (dug with hydrolic earth drill and pushed in with backhoe )





## Austin Potter Eagle Scout Project Photographs

Bridge Preparation and clearing trail to bridge



Finishing the foundations for each side with poles in ground for support







Great delivery – he got the beams real close!

(Right picture)  
We used wench behind us and cable through pulley between trees above us to get the 28' beams across.

